

PRODUCT INFORMATION

TRAMAL[®] CAPSULES
TRAMAL[®] SOLUTION FOR INJECTION
TRAMAL[®] SR TABLETS
TRAMAL[®] ORAL DROPS
(tramadol hydrochloride)

NAME OF THE MEDICINE

Tramal[®] (tramadol hydrochloride) immediate release capsules 50 mg

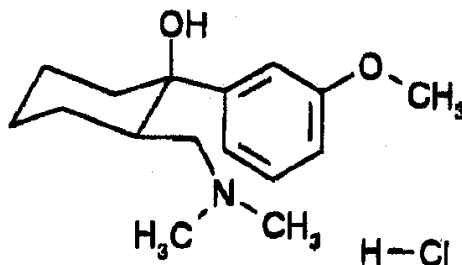
Tramal[®] (tramadol hydrochloride) solution for injection 50 mg/mL, 100 mg/2 mL

Tramal[®] SR (tramadol hydrochloride) sustained release tablets 50 mg, 100 mg, 150 mg & 200 mg

Tramal[®] oral drops (tramadol hydrochloride) immediate release, solution 100 mg/mL

Tramal[®] capsules, Tramal[®] solution for injection, Tramal[®] SR tablets and Tramal[®] oral drops contain tramadol hydrochloride which is (1*RS*, 2*RS*) -2-[(dimethylamino)methyl]-1-(3-methoxyphenyl) cyclohexanol hydrochloride, with the formula: C₁₆ H₂₅ NO₂. HCl. MW = 299.84.

The structural formula of tramadol hydrochloride is:-



The CAS Registry Number is 36282-47-0.

DESCRIPTION

Tramadol hydrochloride is an odourless, white to off-white crystalline powder that is readily soluble in both water and methanol and has a pKa of 9.41. The water/n-octanol partition coefficient is 1.35 at pH 7. It belongs to the synthetic analgesics class and has opioid-like activity.

The composition of the Tramal[®] capsules, Tramal[®] solution for injection, Tramal[®] SR tablets and Tramal[®] oral drops are as follows:

Tramal[®] 50 mg capsules: contain tramadol hydrochloride 50 mg.

Excipients in Tramal[®] capsules are: microcrystalline cellulose, magnesium stearate, sodium starch glycolate, anhydrous colloidal silica. Excipients in

the capsule shell are: Iron oxide yellow, titanium dioxide, gelatin, sodium lauryl sulphate.

Tramal® 50 & 100 solution for injection: contain tramadol hydrochloride 50 mg/mL. Excipients are: sodium acetate, water for injections.

Tramal® SR sustained release tablets: contain tramadol hydrochloride in the following dose strengths: 50, 100, 150 and 200 mg. Excipients are: hypromellose 10⁵ mPa.s, anhydrous colloidal silica, magnesium stearate, microcrystalline cellulose. Excipients in the film coat are: hypromellose 6 mPa.s, lactose monohydrate, macrogol 6000, propylene glycol, purified talc, titanium dioxide, quinoline yellow aluminium lake (150 and 200 mg tablets only), iron oxide red (150 and 200 mg tablets only), iron oxide yellow (50 and 200 mg tablets only) and iron oxide black (200 mg tablet only).

Tramal® oral drops 100 mg/mL: contain tramadol hydrochloride 100 mg/mL. The excipients in the oral drops include potassium sorbate, glycerol, propylene glycol, sucrose, sodium cyclamate, saccharin sodium, ethoxylated hydrogenated castor oil, mint oil (partly dementholised), anised flavour (87122), and purified water.

PHARMACOLOGY

Pharmacodynamics

Tramadol is a centrally-acting synthetic analgesic of the aminocyclohexanol group with opioid-like effects. It is not derived from natural sources, nor is it chemically related to opiates. Although pre-clinical testing has not completely explained the mode of action, at least two complementary mechanisms appear applicable: binding to μ -opioid receptors and inhibition of re-uptake of noradrenaline and serotonin. The opioid-like activity of tramadol derives from low affinity binding of the parent compound to μ -opioid receptors and higher affinity binding of the principal active metabolite, mono *O*-desmethyltramadol, denoted M1, to μ -opioid receptors. In animal models, M1 is up to 6 times more potent than tramadol in producing analgesia and 200 times more potent in μ -opioid binding. The contribution of tramadol to human analgesia, relative to M1, is unknown. Both human and animal studies have shown that antinociception induced by tramadol is only partially antagonised by the opiate antagonist naloxone. In addition, tramadol has been shown to inhibit re-uptake of noradrenaline and serotonin *in vitro*, as have some other opioid analgesics. These latter mechanisms may contribute independently to the overall analgesic profile of tramadol.

The analgesic effect is dose dependent, but the relationship between serum concentrations and analgesic effect varies considerably between individuals. In one study, the median serum concentration of tramadol required for effective post-operative analgesia was 300 ng/mL, with individual values ranging from 20 to 990 ng/mL.

Apart from analgesia, tramadol may produce other symptoms similar to that of opioids including: dizziness, somnolence, nausea, constipation, sweating and pruritus. However, tramadol causes significantly less respiratory depression than morphine. In contrast to morphine, tramadol has not been shown to cause histamine release. At therapeutic doses, tramadol has no

clinically significant effect on heart rate, left ventricular function or cardiac index. Orthostatic changes in blood pressure have been observed.

Pharmacokinetics

Tramadol is administered as a mixture of two stereoisomers; the following information refers to the combined concentration of both isomers. Tramadol has a linear pharmacokinetic profile within the therapeutic dosage range.

Absorption

Tramadol is rapidly and almost completely absorbed after oral administration of 50 mg capsules following a mean absorption delay (t_0) of approximately 30 minutes. The absorption half-life ($t_{1/2}$) is 23 ± 11 minutes. After oral administration of two 50 mg capsules, the mean absolute bioavailability (f_{abs}) is 68-72% and the peak serum level (C_{max}) is reached two hours (range one to three) after administration. The mean peak plasma concentration (C_{max}) is approximately 280 ng/mL after oral administration of two capsules. At this time, the mean serum concentration after intravenous injection is 1.46 times higher, amounting to approximately 410 ng/mL. Oral administration of tramadol with food does not significantly affect its rate or extent of absorption. Therefore tramadol can be administered without regard to food.

After repeated oral administration of 50 mg and 100 mg tramadol capsules at six hourly intervals, steady state is reached 30 to 36 hours after the first administration and the bioavailability is greater than 90%. The plasma concentrations at steady state exceeded by 52% and 36% those extrapolated from the single dose administration studies with 50 mg and 100 mg capsules, respectively. This can be explained by first pass metabolic saturation.

After intramuscular injection of 50 mg tramadol, the bioavailability is approximately 100%, and the peak serum level is attained after 45 minutes (range 15 to 90).

After oral administration of Tramal[®] SR, more than 90% of tramadol is absorbed. After a single dose, the mean absolute bioavailability is approximately 70%, irrespective of the concomitant intake of food. Oral bioavailability increases to 90% after repeated administration. The difference between absorbed and bioavailable tramadol is due to first-pass metabolism (maximum 30%).

The administration of Tramal[®] SR every 12 hours and Tramal[®] (immediate release) every 6 hours at the same total daily dose, resulted in similar peak and trough serum tramadol concentrations and total tramadol exposure for the two preparations.

Serum tramadol concentrations in young males treated with Tramal®

SR (mean ± sd)

| | Single Dose | | Steady State | |
|------------------|-------------|-----------|--------------|--------------|
| | 100 mg | 200 mg | 100 mg q12 h | 200 mg q12 h |
| Peak (ng/mL) | 142 ± 40 | 260 ± 113 | 293 ± 113 | 579 ± 149 |
| Time to peak (h) | 4.9 ± 0.8 | 4.8 ± 0.8 | 3.5 ± 1 | 3.9 ± 1.1 |
| Trough (ng/mL) | - | - | 156 ± 87 | 265 ± 67 |

Distribution

Tramadol is rapidly distributed in the body, with a volume of distribution of 2 – 3 L/kg in young adults. The volume of distribution is reduced by about 25% in those aged over 75 years. Plasma protein binding is about 20% and is independent of concentration up to 10 µg/mL. Saturation of plasma protein binding occurs only at concentrations outside the clinically relevant range.

Tramadol crosses both the placenta and the blood-brain barrier. Very small amounts of tramadol and M1 are found in breast-milk (0.1% and 0.02% respectively of the administered dose).

Metabolism

Tramadol is extensively metabolised after oral administration. The major metabolic pathways appear to be *N*- and *O*-demethylation and glucuronidation or sulfation in the liver. Only *O*-desmethyltramadol (M1) is pharmacologically active. Production of M1 is dependent on the CYP2D6 isoenzyme of cytochrome P450. Patients who metabolise drugs poorly via CYP2D6 may obtain reduced benefit from tramadol, due to reduced formation of M1.

N-demethylation is catalysed by the CYP3A4 isoenzyme of cytochrome P450. The inhibition of one or both types of the isoenzymes CYP3A4 and CYP2D6 involved in the biotransformation of tramadol may affect the plasma concentration of tramadol or its active metabolite.

Excretion

Tramadol and its metabolites are excreted mainly by the kidneys, with a cumulative renal excretion (tramadol and metabolites) of approximately 95%. In young adults approximately 15 – 19 % of an administered dose of tramadol is excreted in the urine as unmetabolised drug. In the elderly, this increases to about 35%. Biliary excretion is of little importance.

In young adults, the half-life of tramadol is 5 – 7 h and the half-life of M1 is 6 – 8 h. Total clearance is approximately 430 – 610 mL/min.

Pharmacokinetics in patients with hepatic or renal impairment

Elimination of tramadol and M1 is impaired in patients with hepatic or renal impairment (see **PRECAUTIONS**). In patients with hepatic impairment, the mean half-life of tramadol was found to be 13 h (range up to 19 h), and the mean half-life of M1 was 19 h (range up to 36 h). In patients with renal impairment including subjects with a considerably decreased CL_{Cr} [$< 5\text{ mL/min}$] the mean half-life of tramadol was 11 h (range up to 20 h), and the mean half-life of M1 was 17 h (range up to 43 h).

Pharmacokinetics in the elderly

In the elderly (age over 75 years), the volume of distribution of tramadol is decreased by 25% and clearance is decreased by 40%. As a result, tramadol C_{max} and total exposure are increased by 30% and 50%, respectively, but the half-life of tramadol is only slightly prolonged (by 15%).

INDICATIONS

Relief of moderate to severe pain.

CONTRAINDICATIONS

Tramadol is contraindicated in:

- individuals with known hypersensitivity to tramadol or any excipients
- acute intoxication with alcohol, hypnotics, analgesics, opioids or psychotropic drugs
- patients who are receiving MAO inhibitors or who have taken them within the last 14 days
- known sensitivity to opioids
- patients with uncontrolled epilepsy or epilepsy not adequately controlled by treatment.

Tramadol must not be used for narcotic withdrawal treatment.

PRECAUTIONS

Galactose intolerance

Tramal[®] SR tablets contain 2.5 mg lactose monohydrate per tablet. Patients with rare hereditary problems of galactose intolerance, the Lapp lactase deficiency or glucose-galactose malabsorption should consult a physician before use.

Acute abdominal conditions

The administration of tramadol may complicate the clinical assessment of patients with acute abdominal conditions.

Respiratory depression

Tramadol should be administered cautiously in patients at risk of respiratory depression.

When large doses of tramadol are administered with anaesthetic medications or alcohol, respiratory depression may result. Cases of intra-operative respiratory depression, usually with large intravenous doses of tramadol and with concurrent administration of respiratory depressants, have been reported.

Increased intracranial pressure, head trauma, shock or reduced levels of consciousness

Tramadol should be used with caution in patients with increased intracranial pressure, head injury, shock or a reduced level of consciousness of uncertain origin. Pupillary changes (miosis) from tramadol may obscure the existence, extent, or course of intracranial pathology. Clinicians should also

maintain a high index of suspicion for adverse drug reaction when evaluating altered mental status in these patients if they are receiving tramadol.

Renal and hepatic disease

With the prolonged half-life in these conditions, achievement of steady state is delayed, so that it may take several days for elevated plasma concentrations to develop.

Renal disease

In patients with renal insufficiency the elimination of tramadol is delayed. In these patients prolongation of the dosage intervals should be carefully considered according to the patient's requirements. In cases of severe renal insufficiency Tramal[®] prolonged-release tablets are not recommended. As tramadol is removed only very slowly by haemodialysis or haemofiltration, post-dialysis administration to maintain analgesia is not usually necessary.

Hepatic disease

Metabolism of tramadol and M1 is reduced in patients with advanced cirrhosis of the liver. In cirrhotic patients, dosage reduction is recommended (see **DOSAGE AND ADMINISTRATION**).

Effect on ability to drive or use machinery

Due to its sedative effect, patients should be advised to avoid driving or operating machinery whilst taking tramadol.

Patients physically dependent on opioids

Tramadol is not recommended as a substitute in opioid-dependent patients. Although tramadol is an opiate-agonist, it cannot suppress opioid withdrawal symptoms. Animal experiments have shown that under certain circumstances the administration of tramadol may provoke a withdrawal syndrome in opioid-dependent monkeys.

Because of the difficulty in assessing dependence in patients who have previously received substantial amounts of opioid medications, caution should be used in the administration of tramadol to such patients.

In patients with a tendency for drug abuse or dependence, treatment with tramadol should only be carried out for short periods under strict medical supervision.

Cases of dependence and abuse of tramadol have been reported rarely.

Seizure risk

Convulsions have been reported in patients receiving tramadol at the recommended dose levels. The risk may be increased when doses of tramadol exceed the recommended upper daily dose limit. In addition, tramadol may increase the seizure risk in patients taking other medication that lowers the seizure threshold (see **Interactions with other drugs**).

Patients with epilepsy or those susceptible to seizures should only be treated with tramadol if there are compelling circumstances.

Anaphylactoid reactions

Serious and rarely fatal anaphylactoid reactions have been reported in patients receiving tramadol. These reactions often occur following the first dose. Other reported reactions include pruritus, hives, bronchospasm and angioedema.

Intra-operative use

In one study using nitrous oxide/tramadol anaesthetic technique (with only intermittent administration of enflurane 'as required'), tramadol was reported to enhance intra-operative recall. Hence its use during potentially very light planes of general anaesthesia should be avoided.

Two recent studies of tramadol administration during anaesthesia comprising continuous administration of isoflurane did not show clinically significant lightening of anaesthetic depth or intra-operative recall.

Therefore, providing the current practice of administering continuous, potent (volatile or intravenous) anaesthetic agent is followed, tramadol may be used intra-operatively in the same way as other analgesic agents are routinely used.

Paediatric use

The use of tramadol is not recommended as safety and efficacy in children have not been established. **Tramal[®] oral drops are not approved for use in children less than 12 years of age.**

Use in the elderly

In subjects over the age of 75 years, serum concentrations are slightly elevated and the elimination half-life is slightly prolonged. Subjects in this age group are also expected to vary more widely in their ability to tolerate adverse drug effects. Daily doses in excess of 300 mg are not recommended in patients over 75 years.

Long-term use

Tramadol has been studied in controlled clinical trials for periods of up to three months. In one small uncontrolled study, patients with cancer pain received a dose of 150 mg tramadol per day for up to six months. Beyond six months no clinical studies investigating the safety and efficacy of tramadol are available.

When tramadol treatment of pain is required long-term, careful and regular monitoring should be carried out to establish whether, and to what extent, ongoing treatment is necessary.

Carcinogenesis, mutagenesis and impairment of fertility

Tramadol was not mutagenic in the following assays: Ames *Salmonella* microsomal activation test, CHO/HPRT mammalian cell assay, mouse lymphoma assay (in the presence of metabolic activation), dominant lethal mutation tests in mice, chromosome aberration test in Chinese hamster cells, and bone marrow micronucleus tests in mouse and Chinese hamster cells.

Weakly mutagenic results occurred in the presence of metabolic activation in the mouse lymphoma assay and the micronucleus tests in rat cells.

Overall, the weight of evidence from these tests indicates tramadol does not possess a genotoxic risk to humans.

A slight, but statistically significant increase in two common murine tumours (pulmonary and hepatic) was observed in a mouse carcinogenicity study, particularly in aged mice dosed orally up to 30 mg/kg for approximately two years. Although the study was not conducted using the Maximum Tolerated Dose, or at exposure levels expected in clinical use, this finding is not believed to suggest risk in humans. No such findings occurred in a rat carcinogenicity study.

No effects on fertility in rats were observed for tramadol at oral dose levels of up to 50 mg/kg/day.

Use in pregnancy - Category C

There are no adequate and well-controlled studies with tramadol in pregnant women, therefore, tramadol should not be used during pregnancy. Studies in animals using IV or IM routes of administration have not been conducted. Tramadol has been shown to be embryotoxic and foetotoxic in mice, rats and rabbits at maternally toxic doses of 120 mg/kg in mice, or higher in rats and 75 mg/kg in rabbits, but was not teratogenic at these dose levels. No harm to the foetus due to tramadol was seen at doses that were not maternally toxic.

No drug-related teratogenic effects were observed in progeny of mice, rats or rabbits treated with tramadol (75 mg/kg for rats or 175 mg/kg for rabbits). Embryo and foetal toxicity consisted primarily of decreased foetal weights, skeletal ossification and increased supernumerary ribs at maternally toxic dose levels. Transient delays in development or behavioural parameters were also seen in pups from rat dams allowed to deliver. Embryo and foetal lethality were reported only in one rabbit study at 300 mg/kg, a dose that would cause extreme maternal toxicity in the rabbit.

In peri- and post-natal studies in rats, progeny of dams receiving oral (gavage) dose levels of 50 mg/kg had decreased weights and pup survival was decreased early in lactation at 80 mg/kg (6 - 10 times the maximum human dose). No toxicity was observed for progeny of dams receiving 8, 10, 20, 25 or 40 mg/kg. Maternal toxicity was observed at all dose levels.

Labour and delivery

Tramadol should not be used in pregnant women prior to or during labour unless the potential benefits outweigh the risks, because safe use in pregnancy has not been established. Chronic use during pregnancy may lead to neonatal withdrawal symptoms. If tramadol were to be used during labour, it may cause respiratory depression in the newborn. Tramadol has been shown to cross the placenta. The mean ratio of serum tramadol in the umbilical veins compared to maternal veins was 0.83 for 40 women given tramadol during labour.

The effect of tramadol, if any, on the later growth, development, and functional maturation of the child is unknown.

Use in lactation

Tramadol is not recommended during breast feeding, because its safety in infants and newborns has not been studied. Low levels of tramadol have been detected in breast milk. Following a single intravenous 100 mg dose of tramadol, the cumulative excretion in breast milk within 16 hours

postdose was 100 µg of tramadol (0.1% of the maternal dose) and 27 µg of M1.

INTERACTIONS WITH OTHER MEDICINES

Use with CNS depressants - tramadol should be used with caution and in reduced dosages when administered to patients receiving CNS depressants such as alcohol, opioids, anaesthetic agents, phenothiazines, tranquillisers or sedative hypnotics.

The combination of tramadol with mixed opiate agonists/antagonists (eg. buprenorphine, pentazocine) is not advisable because the analgesic effect of a pure agonist may be theoretically reduced in such circumstances.

Use with other serotonergic agents - the presence of another drug that increases serotonin by any mechanism should alert the treating physician to the possibility of an interaction. Concomitant therapeutic use of tramadol and serotonergic medicines such as selective serotonin re-uptake inhibitors (SSRIs), serotonin-norepinephrine reuptake inhibitors (SNRIs), MAO inhibitors (see 'Contraindications' section), tricyclic antidepressants and mirtazapine may cause serotonin toxicity. Serotonin syndrome is likely when one of the following is observed:

- Spontaneous clonus
- Inducible or ocular clonus with agitation or diaphoresis
- Tremor and hyperreflexia
- Hypertonia and body temperature >38°C and inducible or ocular clonus

Withdrawal of the serotonergic medicines usually brings about a rapid improvement. Drug treatment depends on the nature and severity of the symptoms.

Use with coumarin derivatives - caution should be exercised during concomitant treatment with tramadol and coumarin derivatives (eg. warfarin) due to reports of increased international normalised ratio (INR) with major bleeding and ecchymoses in some patients.

Drugs which reduce the seizure threshold - tramadol can induce convulsions and increase the potential for selective serotonin re-uptake inhibitors (SSRIs), serotonin norepinephrine reuptake inhibitors (SNRIs), tricyclic antidepressants, antipsychotics and other seizure-threshold-lowering drugs (such as bupropion, mirtazapine, tetrahydrocannabinol) to cause convulsions.

Use with MAO inhibitors - tramadol should not be used in patients who are taking MAO inhibitors or who have taken them within the last fourteen days, as tramadol inhibits the uptake of noradrenaline and serotonin (see **CONTRAINDICATIONS**).

Other interactions - tramadol does not appear to induce its own metabolism in humans, since observed maximal serum concentrations after multiple oral doses are higher than expected based on single-dose data.

Tramadol is a mild inducer of selected drug metabolism pathways measured in animals.

Concomitant administration of tramadol with carbamazepine causes a significant increase in tramadol metabolism, presumably through metabolic induction by carbamazepine. Patients receiving chronic carbamazepine doses of up to 800 mg daily may require up to twice the recommended dose of tramadol.

Tramadol is metabolised to M1 by the CYP2D6 P450 isoenzyme. Drugs that selectively inhibit that isoenzyme (quinidine, phenothiazines, antipsychotic agents) may cause increased concentrations of tramadol and decreased concentrations of M1. The clinical consequences of these potential effects have not been fully investigated.

Concomitant administration of tramadol with cimetidine does not result in clinically significant changes in tramadol pharmacokinetics. Therefore no alteration of the tramadol dosage regimen is recommended.

Other drugs known to inhibit the CYP3A4 isoenzyme of cytochrome P450, such as ketoconazole and erythromycin, may inhibit the metabolism of tramadol (via *N*-demethylation) and probably the metabolism of the active *O*-demethylated metabolite (M1). The clinical importance of such an interaction has not been studied.

In a limited number of studies, the pre- or post-operative application of the antiemetic 5-HT₃ antagonist ondansetron increased the requirement of tramadol in patients with postoperative pain.

ADVERSE EFFECTS

Adverse reactions that may occur after administration of tramadol resemble those known to occur with opioids. Adverse reactions were recorded in 13,802 patients from trials with different formulations of tramadol. The nature and incidence of reactions (in CIOMS format where very common = > 1/10; common = >1/100 and <1/10; uncommon = >1/1000 and <1/100; rare = >1/10,000 and <1/1000; and very rare = <1/10,000) were as follows:

Immune system disorders

Rare: shock reactions, anaphylaxis, allergic reactions

Endocrine disorders

Very rare: Syndrome of inappropriate antidiuretic hormone secretion characterised by hyponatraemia secondary to decreased free-water excretion

Metabolism and nutrition disorders

Rare: changes in appetite

Psychiatric disorders

Rare: hallucinations, confusional state, sleep disturbance, delirium, anxiety, nightmares, changes in mood (usually euphoric mood, occasionally dysphoria), changes in activity (usually suppression, occasionally increase), changes in cognitive and sensorial capacity (eg. decision behaviour, perception disorders),

Nervous system disorders

Very common: dizziness

Common: autonomic nervous effects (mainly dry mouth, perspiration), headache, sedation, asthenia

Uncommon: trembling

Rare: speech disorders, paraesthesia, coordination disturbance, tremor, seizures, involuntary muscle contractions, syncope

Eye disorders

Rare: miosis, mydriasis, visual disturbance (blurred vision)

Cardiac disorders

Uncommon: tachycardia, flushing

Rare: bradycardia

Vascular disorders

Uncommon: orthostatic dysregulation (tendency to collapse and cardiovascular collapse)

Respiratory, thoracic and mediastinal disorders

Rare: dyspnoea, respiratory depression (when the recommended doses are considerably exceeded and other respiratory depressant substances are administered concomitantly)

Very rare: worsening of asthma (causality not established)

Gastrointestinal disorders

Very common: nausea

Common: vomiting, constipation

Uncommon: dyspepsia, diarrhoea, abdominal pain, flatulence, urge to vomit

Hepatobiliary disorders:

Very rare: elevated liver enzymes

Skin and subcutaneous tissue disorders

Common: sweating

Uncommon: skin reactions, pruritus, rash

Musculoskeletal and connective tissue disorders:

Rare: motor system weakness

Renal and urinary disorders

Rare: micturition disorders (difficulty in passing urine and urinary retention), dysuria

General disorders and administration site conditions

Common: fatigue

Investigations

Rare: increase in blood pressure

The incidence of “CNS irritation” (dizziness), “autonomic nervous effects” (perspiration), “orthostatic dysregulation” (tendency to collapse and cardiovascular collapse) and tachycardia and “nausea/urge to vomit/vomiting” can be increased with rapid intravenous administration and also tends to be dose dependent. No tests of significance have been performed.

Drug abuse and dependence

Although tramadol can produce drug dependence of the μ -opioid type (like codeine or dextropropoxyphene) and potentially may be abused, there has been little evidence of abuse in clinical experience to date. In clinical trials, tramadol produced some effects similar to an opioid, and at supratherapeutic doses was recognised as an opioid in subjective/behavioural studies. Part of the activity of tramadol is thought to be derived from its active metabolite, which is responsible for some delay in onset of activity and some extension of the duration of μ -opioid activity. Delayed μ -opioid activity is believed to reduce a drug’s abuse liability.

Tolerance and withdrawal

Tolerance development has been reported to be relatively mild. Symptoms of withdrawal reactions, similar to those occurring during opiate withdrawal, may occur as follows: agitation, anxiety, nervousness, insomnia, hyperkinesia, tremor, pyrexia, myalgia, chills and gastrointestinal symptoms. Other symptoms that have very rarely been seen with tramadol discontinuation include panic attacks, severe anxiety, hallucinations, paraesthesias, tinnitus and unusual CNS symptoms (i.e. confusion, delusions, personalization, derealization, paranoia).

DOSAGE AND ADMINISTRATION

The dose of tramadol should be titrated according to the severity of the pain and the clinical response of the individual patient. Tramadol is approved for use in adults and adolescents over the age of 12 years. **Tramal[®] oral drops are not approved for use in children less than 12 years of age (see PRECAUTIONS - Paediatric use).**

The recommended dosage of Tramal[®] capsules, Tramal[®] solution for injection, Tramal[®] SR tablets and Tramal[®] oral drops respectively are as follows:

Tramal[®] capsules

Oral administration - for the treatment of moderate pain, Tramal[®] 50 - 100 mg administered two or three times daily may be sufficient. Tramal[®] 50 mg may be adequate as the initial dose for moderate pain.

For moderate to severe pain, 50 - 100 mg as needed for relief, every four to six hours may be administered. Tramal[®] 100 mg is usually more effective as the initial dose for more severe pain.

The maximum daily dose should not exceed 400 mg per day.

Tramal® solution for injection

Parenteral administration - Tramal® injection may be administered by intravenous or intramuscular injection. Few data are available on the administration of Tramal® by repeated intramuscular injection. Intravenous injections should be given slowly over 2-3 minutes.

For postoperative pain, an initial bolus of 100 mg should be administered. Subsequent doses of 50 mg or 100 mg every four to six hours may be given, up to a total daily dose of 600 mg.

For less severe pain: 50 mg or 100 mg every four to six hours to a maximum of 400 mg per day.

Tramal® SR tablets

Oral administration - the recommended dose of Tramal® SR in adults and adolescents over the age of 12 years is 100 to 200 mg twice daily, preferably morning and evening.

For initial titration therapy, a lower starting dose may be appropriate for some patients.

The tablets are to be taken whole, not divided or chewed, with sufficient liquid, irrespective of food intake.

The maximum daily dose should not exceed 400 mg per day.

Tramal® oral drops

Tramal® oral drops are not approved for use in children less than 12 years of age.

Oral administration - for moderate pain, the recommended dose of Tramal® oral drops in adults and adolescents over the age of 12 years is a single dose of 20 drops of Tramal® oral drops. This provides 50 mg of tramadol hydrochloride. If there is no pain relief after 30 to 60 minutes, a second dose of 20 drops of Tramal® oral drops can be taken. Depending on the pain, the analgesic effect lasts for 4 to 6 hours.

For severe pain, the recommended dose of Tramal® oral drops in adults and adolescents over the age of 12 years is a single dose of 40 drops of Tramal® oral drops. This provides 100 mg of tramadol hydrochloride.

The maximum daily dose should not exceed a total of 160 drops (that is 8 x 20 drops or 4 x 40 drops). This maximum daily dose provides 400 mg tramadol hydrochloride.

Contents of tramadol hydrochloride in single drops:

| Drop number | Tramadol hydrochloride |
|-------------|------------------------|
| 1 drop | 2.5 mg |

| | |
|----------|---------|
| 5 drops | 12.5 mg |
| 10 drops | 25 mg |
| 15 drops | 37.5 mg |
| 20 drops | 50 mg |
| 25 drops | 62.5 mg |
| 30 drops | 75 mg |
| 35 drops | 87.5 mg |
| 40 drops | 100 mg |

Renal insufficiency - in patients with renal insufficiency the elimination of tramadol is delayed. In these patients prolongation of the dosage intervals should be carefully considered according to the patient's requirements. In cases of severe renal insufficiency Tramal prolonged-release tablets are not recommended. Since only 7% of an administered dose is removed by haemodialysis, dialysis patients can receive their regular dose on the day of dialysis. .

Hepatic insufficiency - Tramal[®] SR should not be used in patients with severe hepatic insufficiency. In these patients, the immediate release (IR) form of oral tramadol (capsule) may be administered if appropriate. In hepatic impairment, the initial oral dose of tramadol is 50 mg of the immediate release formulation. Depending on the severity of impairment and individual clinical response, the recommended dosage interval (4 to 6 hours) may require to be extended, and/or the dose level titrated as required.

Pharmaceutical compatibility - Tramal[®] solution for injection is incompatible with injection solutions containing diclofenac, indomethacin, phenylbutazone, diazepam, flunitrazepam, glyceryl trinitrate or midazolam. Tramal[®] injection is compatible with the following intravenous fluids: 0.9% sodium chloride, 5% glucose, 4.2% sodium bicarbonate, Ringer's solution, Ringer's lactate solution, Dextran 40 (10%) or polygeline 3.5%.

OVERDOSAGE

Few cases of overdose with tramadol have been reported.

Symptoms

Symptoms of overdose with tramadol are similar to those of other centrally acting analgesics (opioids) and include miosis, vomiting, cardiovascular collapse, consciousness disorders including coma, convulsions, respiratory depression and respiratory arrest.

Treatment

Should overdose occur, general emergency measures should be implemented. Keep the respiratory airways open, and maintain respiration and circulation. If overdose is due to ingestion of a sustained release oral dose form such as Tramal[®] SR, emptying the stomach by gastric lavage should be considered because of the possibility of ongoing release in the stomach. Activated charcoal may reduce absorption of the drug if given within 1-2 hours after ingestion. In patients who are not fully conscious or

have impaired gag reflex, consideration should be given to administering activated charcoal via a nasogastric tube, once the airway is protected. Naloxone will reverse respiratory depression, but not all symptoms caused by overdosage with tramadol. Convulsions occurring in mice following the administration of toxic doses of tramadol could be suppressed with barbiturates or benzodiazepines, but were increased with naloxone. If convulsions are observed, diazepam should be given intravenously. Naloxone did not change the lethality of an overdose in mice. Tramadol is minimally eliminated from the serum by haemodialysis or haemofiltration. Therefore treatment of overdosage with tramadol with haemodialysis or haemofiltration alone is not suitable for detoxification.

Contact the Poisons Information Centre on 131 126 for further advice on overdosage management.

PRESENTATION AND STORAGE CONDITIONS

Tramal[®] 50 mg capsules:

Tramal[®] 50 mg immediate release capsules are packed in PVC/PVDC/Al or PVC/PE/PVDC/Al blister packs of 6, 10, 20, 30 and 50 capsules. Tramal[®] 50 mg immediate release capsules is supplied as oblong, yellow/yellow, shiny hard gelatine capsules size 4.

Tramal[®] 50 & 100 solution for injection:

Tramal[®] 50, solution for injection are packed in Type 1 clear glass ampoule pack containing 5 ampoules of 1 mL each.
Tramal[®] 100, solution for injection are packed in Type 1 clear glass ampoule pack containing 5 ampoules of 2 mL each.
Tramal[®] 50 and Tramal[®] 100 solution for injection are supplied as clear, colourless solution.

Tramal[®] SR sustained release tablets:

Tramal[®] SR 50 mg, 100 mg, 150 mg and 200 mg sustained release tablets are packed in PVC/PVDC/Al or PP/Al blister.

Tramal[®] SR 50 mg, 100 mg are available in pack size of 4, 20 and 60 tablets
Tramal[®] SR 150 mg and 200 mg are available in pack size of 20 and 60 tablets.

Tramal[®] SR 50 mg sustained release tablets are supplied as pale yellow coloured, round, biconvex, film-coated tablets, engraved with "T0" on one side and Grunenthal logo on the other side.

Tramal[®] SR 100 mg sustained release tablets are supplied as white, round, biconvex, film-coated tablets, engraved with "T1" on one side and the Grunenthal logo on the other side.

Tramal[®] SR 150 mg sustained release tablets are supplied as pale orange-coloured, round, bi-convex, film-coated tablets, engraved with "T2" on one side and the Grunenthal logo on the other side.

Tramal[®] SR 200 mg sustained release tablets are supplied as slightly brownish orange-coloured, round, bi-convex, film-coated tablets, engraved with "T3" on one side and the Grunenthal logo on the other side

Tramal[®] oral drops 100 mg/mL:

Tramal[®] oral drops, solution are available in bottle sizes of 10 mL with dropper device.

Tramal[®] oral drops, solution are packed in amber Type III glass bottle with PP child-resistant cap with a dropper.

Tramal[®] oral drops solution is supplied as clear, colourless to weakly yellow slightly viscous liquid, free from visible impurities

Storage conditions:

Tramal[®] capsules, Tramal[®] solution for injection, Tramal[®] SR 50, 100, 150 and 200 tablets and Tramal[®] oral drops should be stored below 30°C.

Protect from light.

NAME AND ADDRESS OF THE SPONSOR

Seqirus Pty Ltd.

ABN 26 160 735 035

63 Poplar Road

Parkville, Victoria 3052

Australia

POISONS SCHEDULE OF THE MEDICINE

S4

DATE OF THE FIRST INCLUSION IN THE AUSTRALIAN REGISTER OF THERAPEUTIC GOODS (ARTG)

7 August 2008

DATE OF MOST RECENT AMENDMENT

8 May 2017

Tramal[®] is a registered trademark of Grunenthal GmbH used by Seqirus as authorised user.